



KEY FEATURES

FC Extension Gateway

Interoperability with Major FC Vendors

The i-8100E appears as an E_port within a local FC fabric, and is fully compliant with E_port FC standards. The i-8100E provides basic services for native modes of major FC switch vendors, and can support a joined FC fabric of Brocade and McData switches operating in their native modes. The i-8100E also implements a full set of services required by FC-SW2 and FC-SW3 standards.

Multi-Service Connectivity

Because the i-8100E provides tunneling of ULP (Upper Layer Protocol) independent Layer 2 Ethernet traffic as well as Fibre Channel through the same WAN infrastructure, the gateway can easily be customized to meet particular application needs. Multiple configurations of Fibre Channel, GbE L2 and FCIP ports are possible in a single box.

Engineered for Long Distance

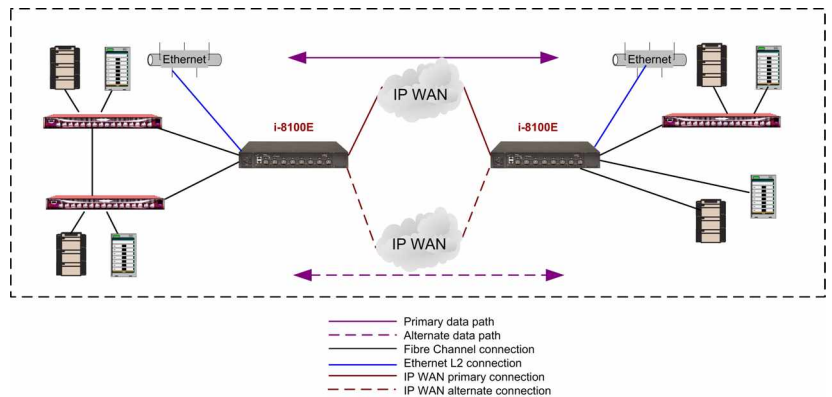
The i-8100E is connected to the WAN over industry standard Gigabit Ethernet IP interfaces, with software configurable speed from T1 to Gigabit Ethernet wire speed. The Congestion Avoidance mechanism implemented on the IP extension interfaces assures maximum performance in shared or low bandwidth IP WAN environments.

On the FCIP side, the i-8100E implements a connection-oriented, frame-based protocol that moves FC and L2 over IP for distances of thousands of kilometers without performance degradation, and with data and order delivery guaranteed. Any frame loss or corruption is completely recovered by the i-8100E rather than by FC or Ethernet end devices.

OVERVIEW

With the ever-increasing need to safeguard data, many companies are looking for a reliable method of connecting their geographically distributed storage area networks (SANs) across the WAN. For applications that are well suited to routed IP networks, LightSand's i-8100E enables SAN extension with an all-in-one fabric switch, gateway and Layer 2 Ethernet tunneling device. This sophisticated 8-port switching gateway supports local switching, direct attachment of storage devices and up to four Gigabit Ethernet extension tunnels for connection between remote sites.

The i-8100E is a cost effective solution for SMB when a relatively low number of Fibre Channel devices participate in the fabric. Easily configurable, yet powerful, the i-8100E is the best choice for small and mid-sized deployments requiring end device connectivity.



APPLICATIONS

The i-8100E SAN extension gateway over MAN and WAN is designed for a wide variety of applications, with an emphasis on storage consolidation, business continuity and disaster recovery.

Data Protection

- Synchronous and asynchronous mirroring
- Remote tape vaulting and backup

SAN Integration

- Interconnection or consolidation
- Integration of remote fabrics

SPECIFICATIONS

SYSTEM ARCHITECTURE

Gateway Architecture.....	8 ports, wire-speed, unblocked, aggregate Bandwidth - 16 Gbit/sec
SAN Ports.....	4 to 7 ports
SAN Port Media.....	Fibre Channel, 1.0625 Gb/s, SFP, multi-mode (850nm), as a standard
FC Standards.....	FC-PH-2, FC-SW-2, FC-GS-3, FC-MI, FC-PH, FC-GS2, FC-FS, FC, PH-2
FC Port Types.....	E_port, F_port
FC CoS.....	Class 2, Class 3, Class F
B2B Credits.....	Up to 16
L2 Tunneling Ports.....	1 to 3 ports (pre-configured)
L2 Port Media.....	Gigabit Ethernet, 1.25 Gb/s, SFP, multi-mode (850nm), as a standard
WAN Ports.....	1 to 4 ports (pre-configured)
WAN Port Media.....	Gigabit Ethernet, 1.25 Gb/s, SFP, multi-mode (850nm) as standard
Gigabit Ethernet Standards.....	802.3z
Encapsulation.....	FC over IP (FCIP)
Extension Distance.....	6000 km at Full Wire-Speed

SPECIAL FEATURES SET

Redundancy.....	Box level redundancy
Compression.....	Over IP, maximum ratio 1:21
Bandwidth Management.....	Manual rate limitation; Rate auto-adjustment (congestion avoidance)

MANAGEMENT

Supported Software.....	SANman™ (GUI); Telnet, SNMP; MIB-II, Fiber Alliance MIB, RMON MIB, RFC 2837, configurable traps
Management Access.....	10/100BaseT Ethernet (RJ-45); Serial port;
Diagnostics.....	BIST (built-in self test); Local Spin Test; Remote Spin Test; Bandwidth Probing

MECHANICAL SPECIFICATIONS

Dimensions.....	Width: 17.4" x Depth: 17.9" x Height: 2.6" - 1.5u
Weight.....	22.9 pounds (10.4 kg)
Rack Mounting.....	19"rack
Cooling.....	Front to back (fans FRU, hot swap)

POWER SPECIFICATIONS

Dual Power Supply (optional).....	FRU (hot swap)
Supported Power.....	Nominal: 320mA at 220-240V; Nominal: 640mA at 110-115V (auto-select)
Frequency.....	50/60 Hz
Power Consumption.....	75 Watts (maximum)

ENVIRONMENT AND REGULATIONS

Temperature.....	0°C to 40°C (32°F to 104°F)
Humidity.....	5% to 85% non-condensing
Regulatory.....	UL Listed, FCC Class A product, complies with Canadian ICES-003



LightSand Headquarters

101 East Park Boulevard, Suite #600
Plano, TX 75074
Phone: +1-972-516-3740
Fax: +1-972-516-3741

LightSand European Headquarters

23, Rue Balzac
75008 Paris France
Phone: +331 53 53 67 67
Fax: +331 53 53 67 00