



i8100E-SMB

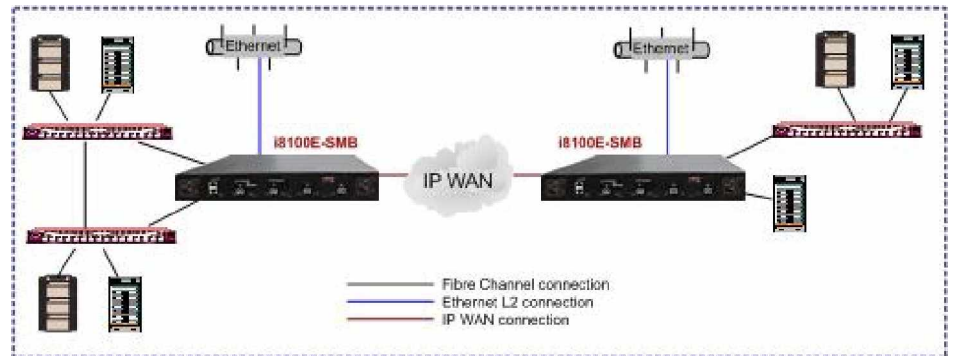
KEY FEATURES:

- Multi-Functional FC and Layer 2 GbE Over Routed IP Gateway**
- Interoperability**
Appears as an E_port within a local FC fabric, and is fully compliant with standard FC E_port. The i8100E-SMB is fully compliant with FC standards and provides basic services for native modes of major FC switch vendors.
- Multi-Service Connectivity**
Provides tunneling of ULP independent L2 Ethernet traffic as well as Fibre Channel through the same WAN infrastructure, to meet particular application needs.
- Designed for Distance**
On the FCIP side i8100E-SMB implements a connection-oriented, frame-based reliable protocol that moves FC and L2 over IP for distances of thousands of kilometers without performance degradation, and with data and order delivery guaranteed. Software adjustable speed and Congestion Avoidance mechanism allow maintaining optimal possible performance in shared or low bandwidth IP WAN environments.
- Compression**
Implemented for more effective utilization of low bandwidth or provisioned bandwidth connections. It allows transferring more data while keeping the low price of the extension circuit.

OVERVIEW

With the ever-increasing need to safeguard data, many companies are looking for a reliable method of connecting their geographically distributed storage area networks (SANs) across the WAN. For applications that are well suited to routed IP networks, LightSand's i8100E-SMB enables SAN extension with an all-in-one fabric switch, gateway and Layer 2 Ethernet tunneling device. This sophisticated gateway supports local switching, direct attachment of storage devices, and Gigabit Ethernet extension tunnel for connection between remote sites.

The i8100E-SMB is a cost effective solution for SMB when a relatively low number of Fibre Channel devices participate in the fabric. Easily configurable, yet powerful, the i8100E-SMB is the best choice for small and midsized deployments requiring end device connectivity.



Applications

The i8100E-SMB SAN extension gateway over MAN and WAN is designed for a wide variety of applications, with an emphasis on storage consolidation, business continuity and disaster recovery.

Data Protection

- Synchronous and asynchronous mirroring
- Remote tape vaulting and backup

SAN Integration

- Interconnection or consolidation
- Integration of remote fabrics

SPECIFICATIONS:

SYSTEM ARCHITECTURE:

Gateway Architecture	4 ports, wire-speed, unblocked, aggregate bandwidth - 8 Gbit/sec
SAN Ports.....	2 Fibre Channel ports
SAN Port Media	Fibre Channel, 1.0625 Gb/s, SFP (multi-mode (850nm), as a standard)
FC Standards	FC-PH-2, FC-SW-2, FC-GS-3, FC-MI, FC-PH, FC-GS2, FC-FS
FC Port Type	E_port, F_port
FC CoS	Class 2, Class 3, Class F
B2B Credits	Up to 16
L2 Tunneling Ports	1 Port
L2 Port Media.....	Gigabit Ethernet, 1.25 Gb/s, SFP (multi-mode (850nm), as a standard)
WAN Ports	1 port
WAN Port Media	Gigabit Ethernet, 1.25 Gb/s, SFP (multi-mode (850nm), as a standard)
Gigabit Ethernet Standards	802.3z
Encapsulation	FC over IP (FCIP)
Extension Distance	3,000km

SPECIAL FEATURES

Bandwidth management.....	Manual rate adjustments; Auto-adjustment Rate (congestion avoidance)
Compression.....	Over IP, maximum ratio 1:21

MANAGEMENT

Supported Software	SANman™ (GUI); Telnet, SNMP; MIB-II, Fiber Alliance MIB, RMON MIB, RFC 2837, configurable traps
Management Access	10/100BaseT Ethernet (RJ-45); Serial port;
Diagnostics	BIST (built-in self test); Local Spin Test; Remote Spin Test; Bandwidth Probing

MECHANICAL SPECIFICATIONS

Dimensions.....	Width: 17.4" x Depth: 17.9" x Height: 2.6" - 1.5u
Weight.....	22.9 pounds (10.4 kg)
Rack Mounting	19" rack
Cooling.....	Front to back (fans FRU, hot swap)

POWER SPECIFICATIONS

Dual Power Supply (optional).....	FRU (hot swap)
Supported Power.....	Nominal: 320mA at 220-240V; Nominal: 640mA at 110-115V (auto select)
Frequency	50/60 Hz
Power Consumption.....	75 Watts (maximum)

ENVIRONMENT AND REGULATIONS

Temperature	0°C to 40°C (32°F to 104°F)
Humidity	5% to 85% non-condensing
Regulatory	UL Listed, FCC Class A product, complies with Canadian ICES-003



LightSand Headquarters

101 East Park Boulevard, Suite #600
Plano, TX 75074
Phone: +1-972-516-3740
Fax: +1-972-516-3741

LightSand European Headquarters

23, Rue Balzac
75008 Paris France
Phone: +331 53 53 67 67
Fax: +331 53 53 67 00